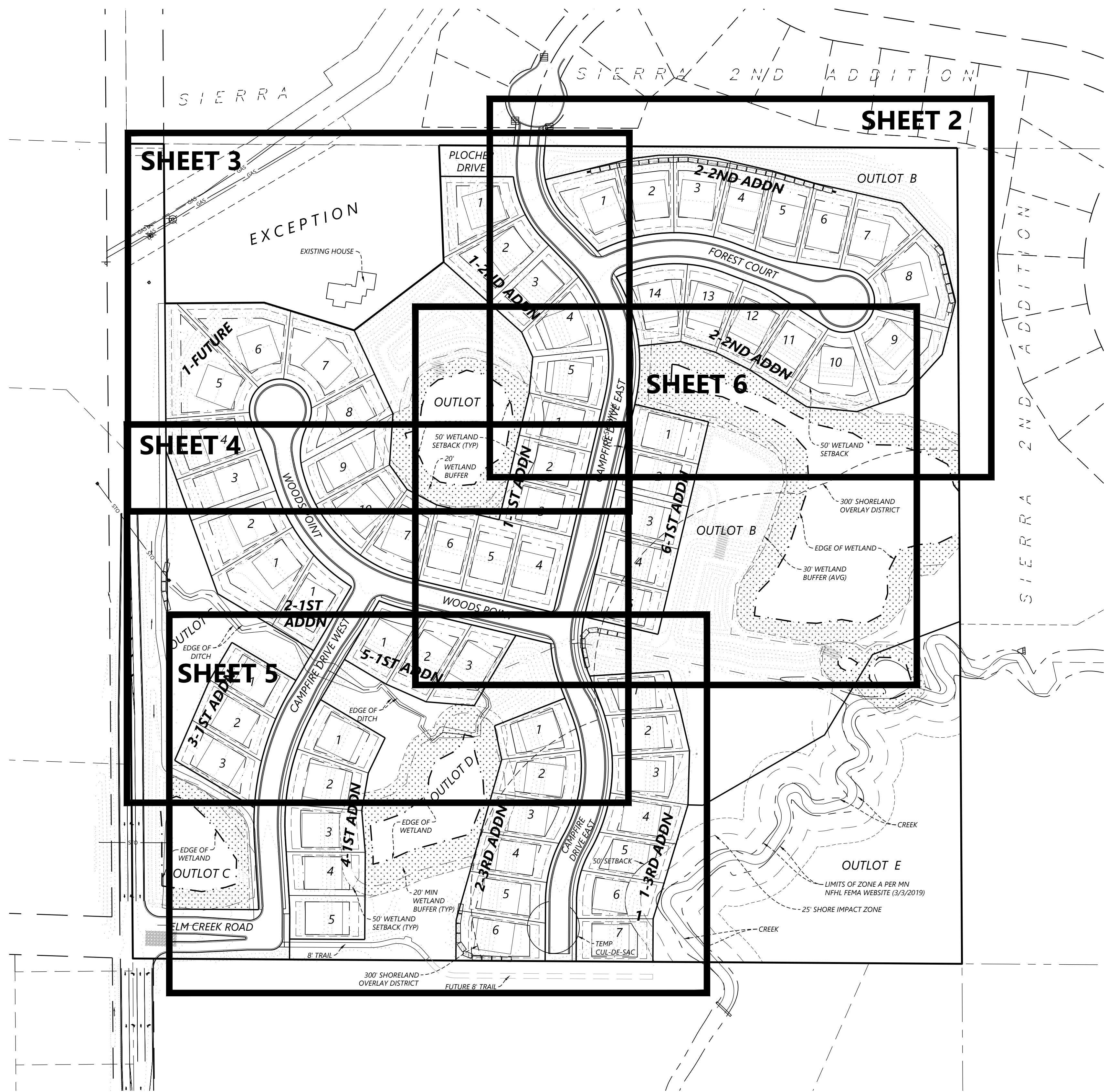


© 2021 Westwood Professional Services, Inc

N:\0021855.00\DWG\CIVIL\0021855-PLAN01.DWG



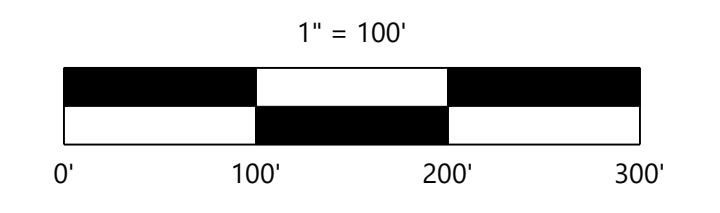
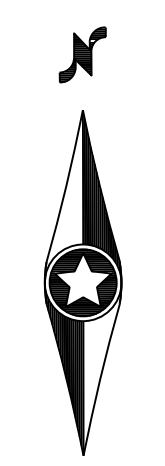
LOT STANDARDS

LOT STANDARDS (SINGLE FAMILY):

MINIMUM LOT WIDTH:	70 FT @ FRONT SETBACK
MINIMUM LOT DEPTH:	120 FT
MINIMUM LOT AREA:	8,400 SF
AVERAGE LOT AREA:	10,295 SF
FRONT YARD SETBACK:	25 FT
SIDE YARD SETBACK:	10 FT (LIVING) 5 FT (GARAGE); 15 FT TOTAL (7.5/7.5 FT SHOWN)
SIDE YARD CORNER SETBACK:	15 FT MINIMUM
REAR YARD SETBACK:	25 FT
WETLAND SETBACK:	50 FT
CREEK SETBACK:	50 FT
IMPERVIOUS COVERAGE:	50% MAX

LOT STANDARDS (VILLA):

MINIMUM LOT WIDTH:	65 FT @ FRONT SETBACK
MINIMUM LOT DEPTH:	120 FT
MINIMUM LOT AREA:	8,112 SF
AVERAGE LOT AREA:	9,037 SF
FRONT YARD SETBACK:	25 FT
SIDE YARD SETBACK:	10 FT (LIVING) 5 FT (GARAGE); 15 FT TOTAL (7.5/7.5 FT SHOWN)
SIDE YARD CORNER SETBACK:	15 FT MINIMUM
REAR YARD SETBACK:	25 FT
IMPERVIOUS COVERAGE:	50% MAX



NOT FOR CONSTRUCTION

DESIGNED:
 CHECKED: CLM
 DRAWN: SRM
 HORIZONTAL SCALE: 100'
 VERTICAL SCALE:

INITIAL ISSUE: 08/25/2021
 REVISIONS:
 PREPARED FOR:
HARTMAN COMMUNITIES
 1750 TOWER BOULEVARD, SUITE 100
 VICTORIA, MN 55386

WOODLAND CREEK
 WACONIA, MINNESOTA

Westwood
 Phone (952) 937-5150 12701 Whitewater Drive, Suite #300
 Fax (952) 937-5822 Minnetonka, MN 55343
 Toll Free (888) 937-5150 westwoods.com
 Westwood Professional Services, Inc.

OVERALL LOT DIMENSION
 EXHIBIT

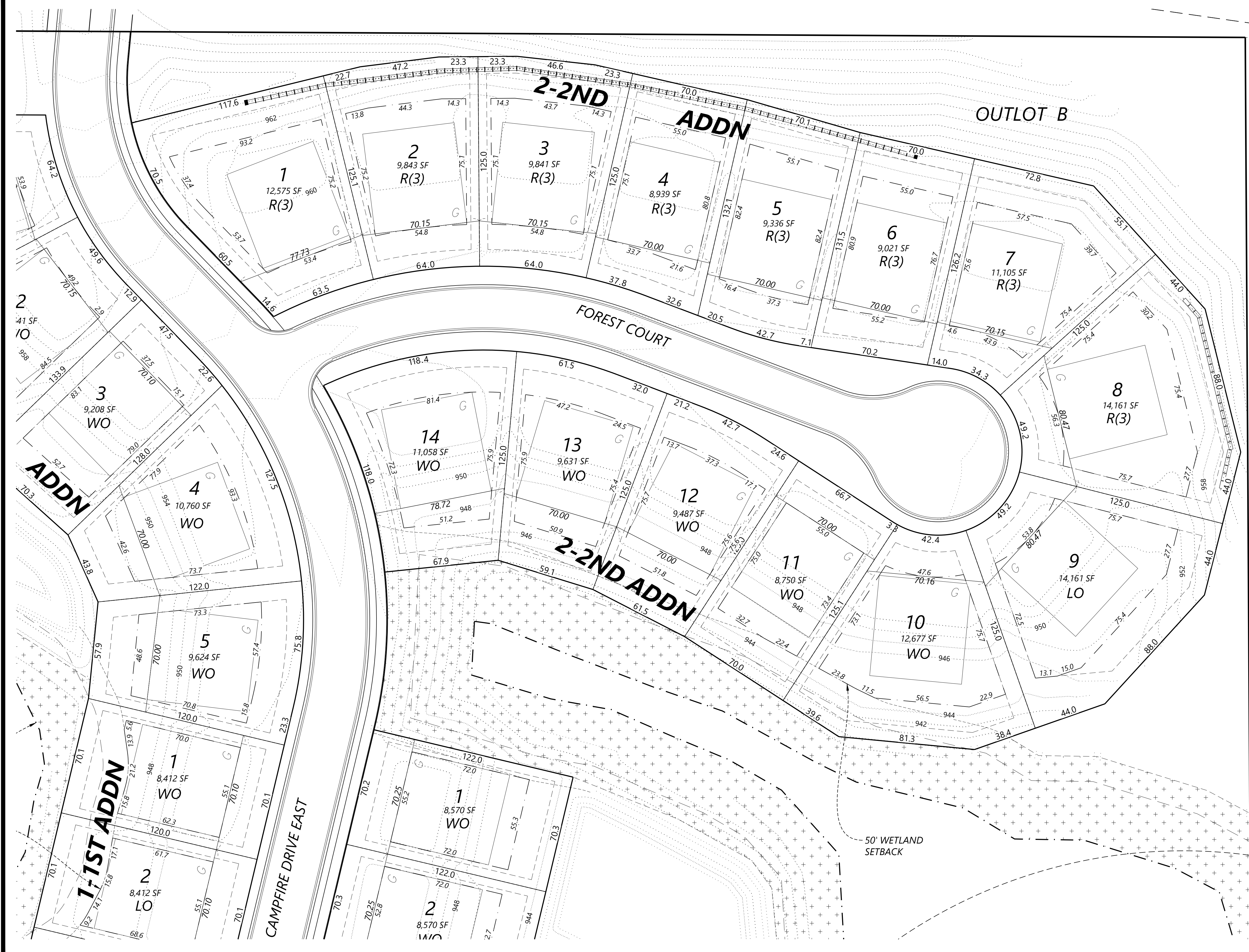
SHEET NUMBER:
1 OF **6**
 DATE: 08/25/2021

PROJECT NUMBER: 0021855.00

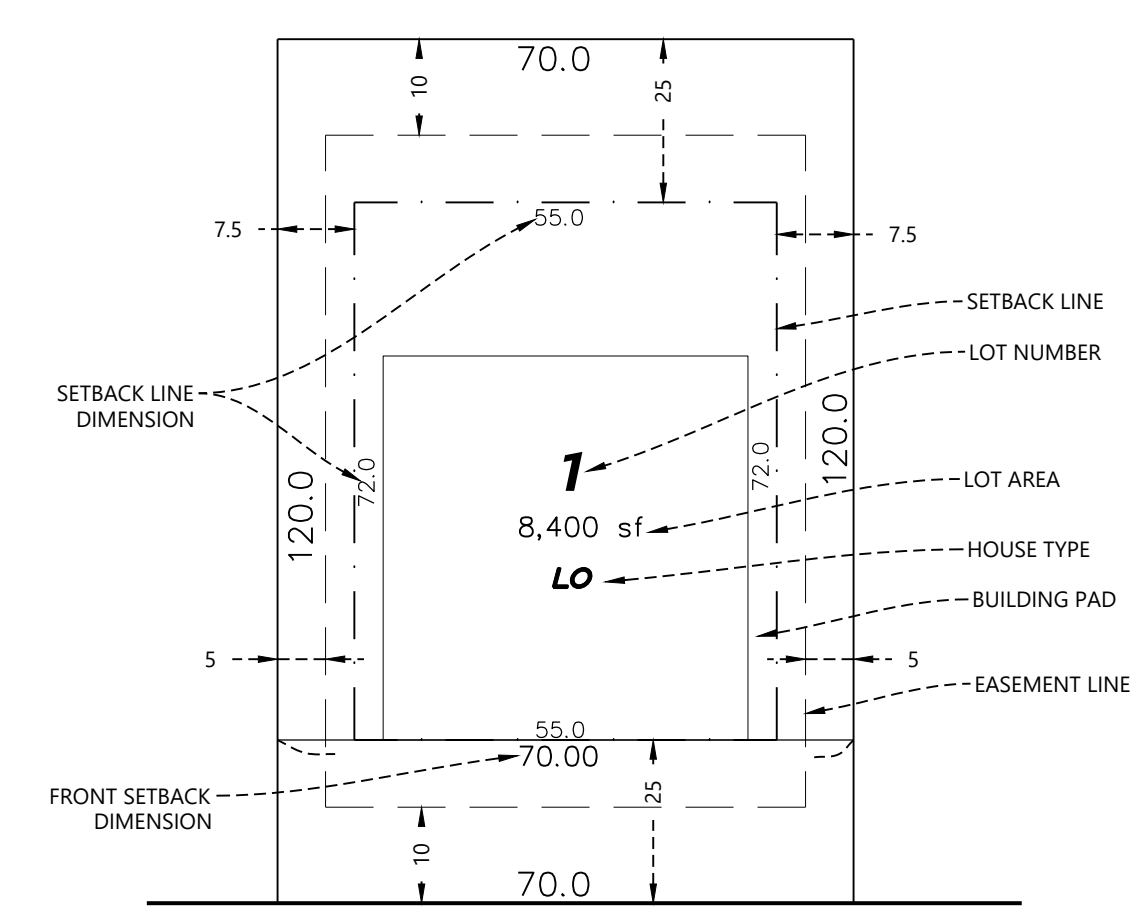
WOODLAND CREEK

© 2021 Westwood Professional Services, Inc.

N:\0021855\00\DWG\CIVIL\0021855-PLAN02.DWG



Typical Lot Detail
 (No Scale)



STREET

NOTE:
 Lot width varies (70' min)

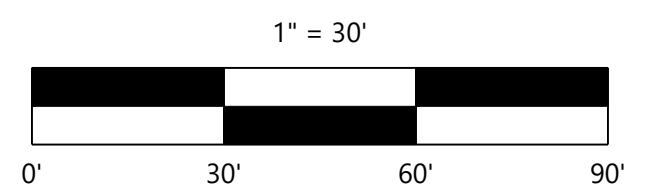
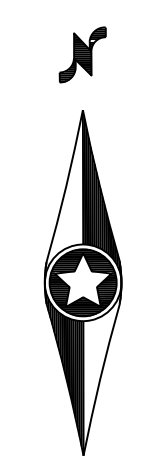
R = RAMBLER, GRADED FOR 8.0' OF DIFFERENCE FROM BASEMENT FLOOR ELEVATION TO FRONT GROUND GRADE AT GARAGE DOOR.

R(1) = RAMBLER, GRADED FOR 7.3' OF DIFFERENCE FROM BASEMENT FLOOR ELEVATION TO FRONT GROUND GRADE AT GARAGE DOOR.

LO = FULL BASEMENT LOOKOUT GRADED FOR 5.5' OF DIFFERENCE FROM THE REAR GROUND GRADE AT THE LOOKOUT TO THE FRONT GROUND GRADE AT THE GARAGE DOOR.

WO = FULL BASEMENT WALKOUT, GRADED FOR 8.5' OF DIFFERENCE FROM THE REAR GROUND GRADE AT THE WALKOUT TO FRONT GROUND AT GARAGE DOOR.

NOTE:
 1. THE NUMBER IN THE PARENTHESIS INDICATES THE NUMBER OF BLOCKS THAT THE GARAGE IS DROPPED. EACH BLOCK=8".



NOT FOR CONSTRUCTION

DESIGNED:	
CHECKED:	CLM
DRAWN:	SRM
HORIZONTAL SCALE:	30'
VERTICAL SCALE:	

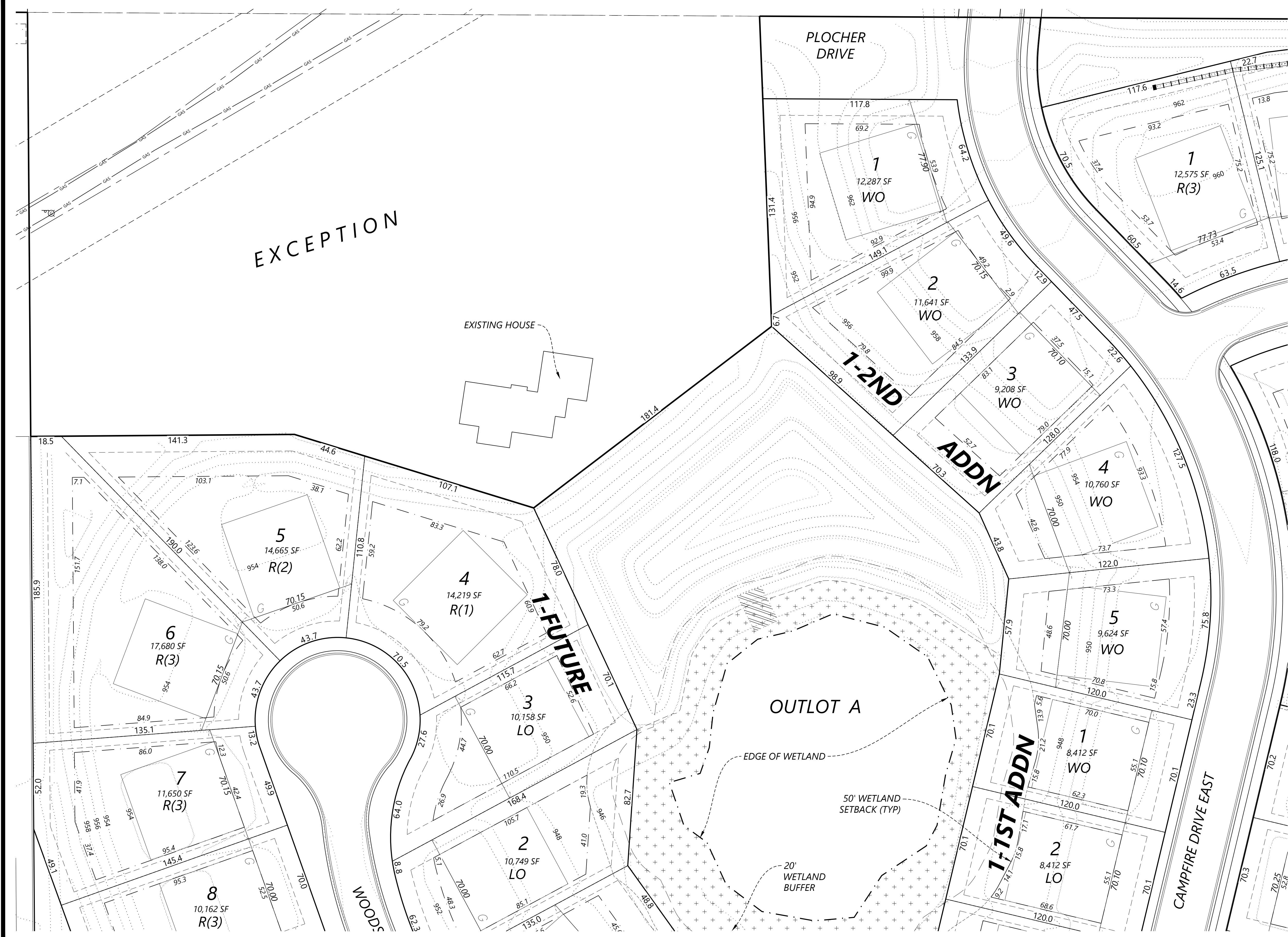
INITIAL ISSUE:	08/25/2021
REVISIONS:	

PREPARED FOR:
HARTMAN COMMUNITIES
 1750 TOWER BOULEVARD, SUITE 100
 VICTORIA, MN 55386

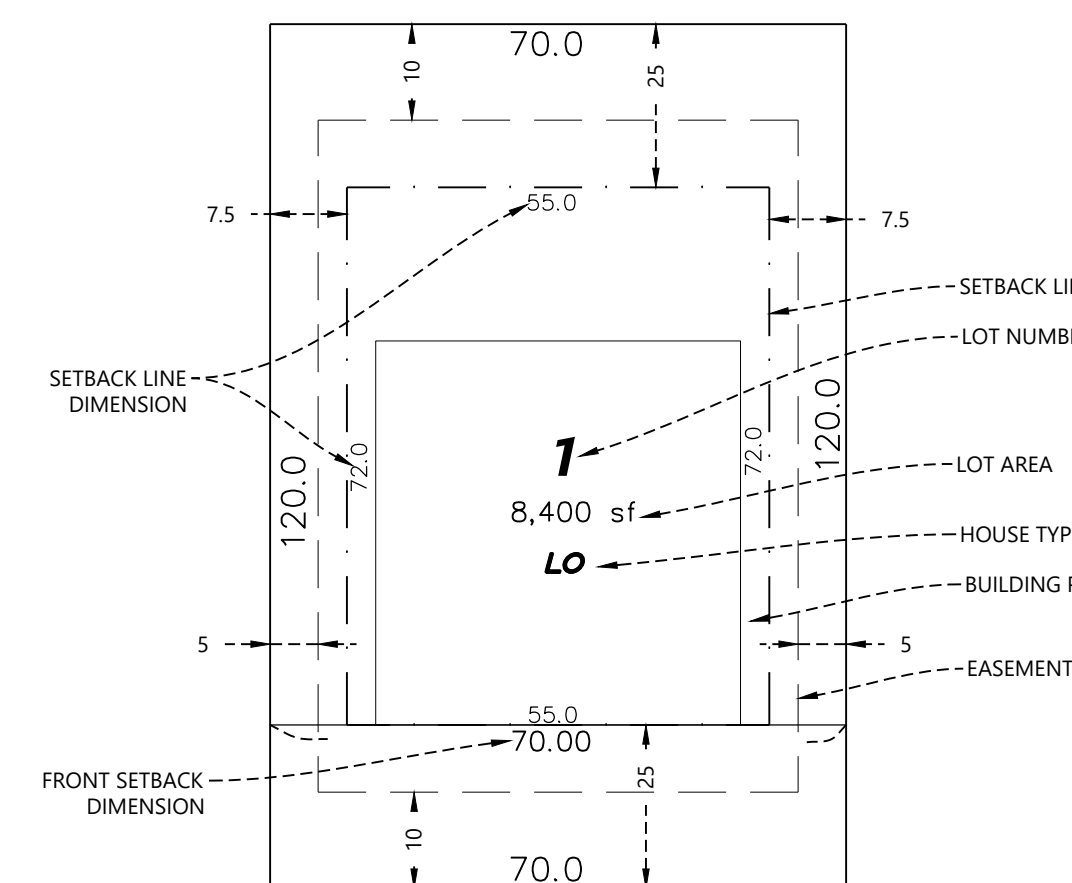
WOODLAND CREEK
 WACONIA, MINNESOTA

Westwood
 Phone (952) 937-5150 12701 Whitewater Drive, Suite #300
 Fax (952) 937-5822 Minnetonka, MN 55343
 Toll Free (888) 937-5150 westwoodps.com
 Westwood Professional Services, Inc.

SHEET NUMBER:
2 OF **6**
LOT DIMENSION EXHIBIT
 PROJECT NUMBER: 0021855.00 DATE: 08/25/2021



Typical Lot Detail
(No Scale)



STREET

NOTE:
Lot width varies (70' min)

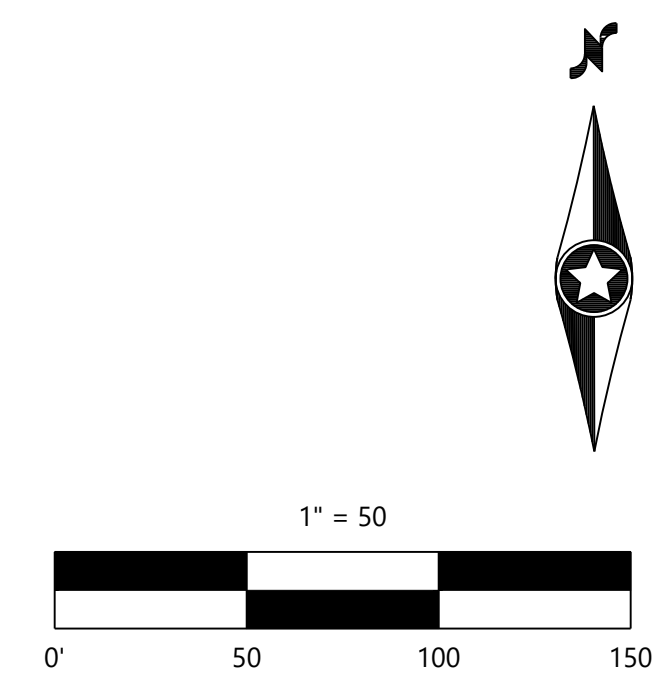
R = RAMBLER, GRADED FOR 8.0' OF DIFFERENCE FROM BASEMENT FLOOR ELEVATION TO FRONT GROUND GRADE AT GARAGE DOOR.

R(1) = RAMBLER, GRADED FOR 7.3' OF DIFFERENCE FROM BASEMENT FLOOR ELEVATION TO FRONT GROUND GRADE AT GARAGE DOOR.

LO = FULL BASEMENT LOOKOUT GRADED FOR 5.5' OF DIFFERENCE FROM THE REAR GROUND GRADE AT THE LOOKOUT TO THE FRONT GROUND GRADE AT THE GARAGE DOOR.

WO = FULL BASEMENT WALKOUT, GRADED FOR 8.5' OF DIFFERENCE FROM THE REAR GROUND GRADE AT THE WALKOUT TO FRONT GROUND AT GARAGE DOOR.

NOTE:
1. THE NUMBER IN THE PARENTHESIS INDICATES THE NUMBER OF BLOCKS THAT THE GARAGE IS DROPPED. EACH BLOCK=8".



NOT FOR CONSTRUCTION

DESIGNED:	
CHECKED:	CLM
DRAWN:	SRM
HORIZONTAL SCALE:	30
VERTICAL SCALE:	

INITIAL ISSUE: 08/25/2021
REVISIONS:

PREPARED FOR:

HARTMAN COMMUNITIES

1750 TOWER BOULEVARD, SUITE 100
VICTORIA, MN 55386

WOODLAND CREEK

WACONIA, MINNESOTA

Westwood

Phone (952) 937-5150 12701 Whitewater Drive, Suite #300
Fax (952) 937-5822 Minnetonka, MN 55343
Toll Free (888) 937-5150 westwoodps.com
Westwood Professional Services, Inc.

LOT DIMENSION EXHIBIT

SHEET NUMBER:

3

OF

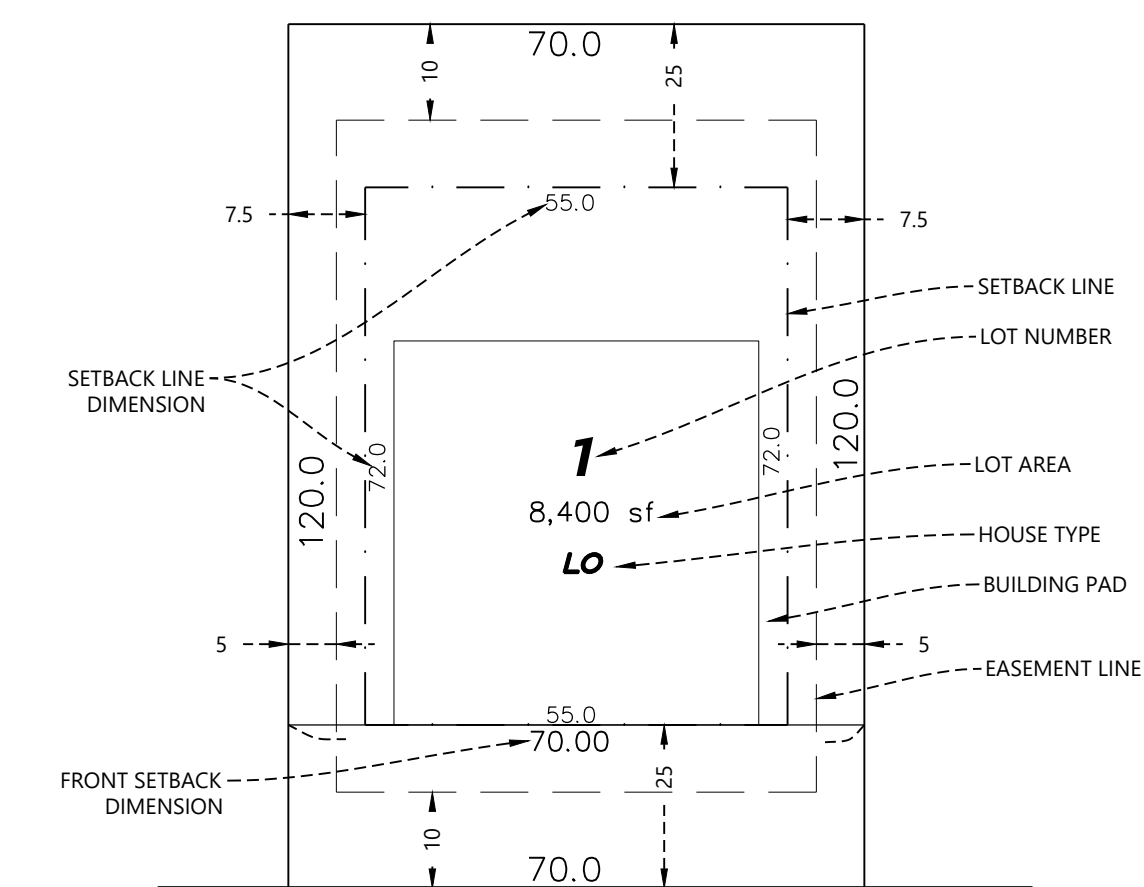
6

PROJECT NUMBER: 0021855.00

DATE: 08/25/2021



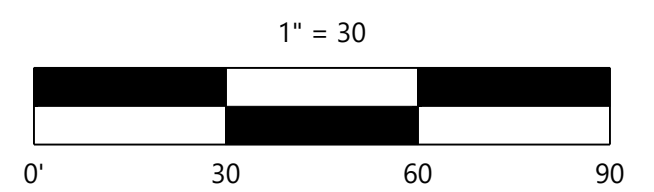
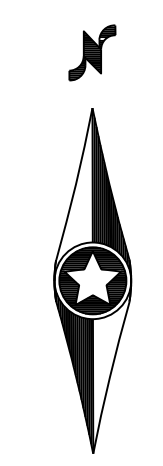
Typical Lot Detail
(No Scale)



STREET
NOTE:
Lot width varies (70' min)

- R = RAMBLER, GRADED FOR 8.0' OF DIFFERENCE FROM BASEMENT FLOOR ELEVATION TO FRONT GROUND GRADE AT GARAGE DOOR.
- R(1) = RAMBLER, GRADED FOR 7.3' OF DIFFERENCE FROM BASEMENT FLOOR ELEVATION TO FRONT GROUND GRADE AT GARAGE DOOR.
- LO = FULL BASEMENT LOOKOUT GRADED FOR 5.5' OF DIFFERENCE FROM THE REAR GROUND GRADE AT THE LOOKOUT TO THE FRONT GROUND GRADE AT THE GARAGE DOOR.
- WO = FULL BASEMENT WALKOUT, GRADED FOR 8.5' OF DIFFERENCE FROM THE REAR GROUND GRADE AT THE WALKOUT TO FRONT GROUND AT GARAGE DOOR.

NOTE:
1. THE NUMBER IN THE PARENTHESIS INDICATES THE NUMBER OF BLOCKS THAT THE GARAGE IS DROPPED. EACH BLOCK=8".



NOT FOR CONSTRUCTION

DESIGNED:	
CHECKED:	CLM
DRAWN:	SRM
HORIZONTAL SCALE:	30
VERTICAL SCALE:	

INITIAL ISSUE:	08/25/2021
REVISIONS:	

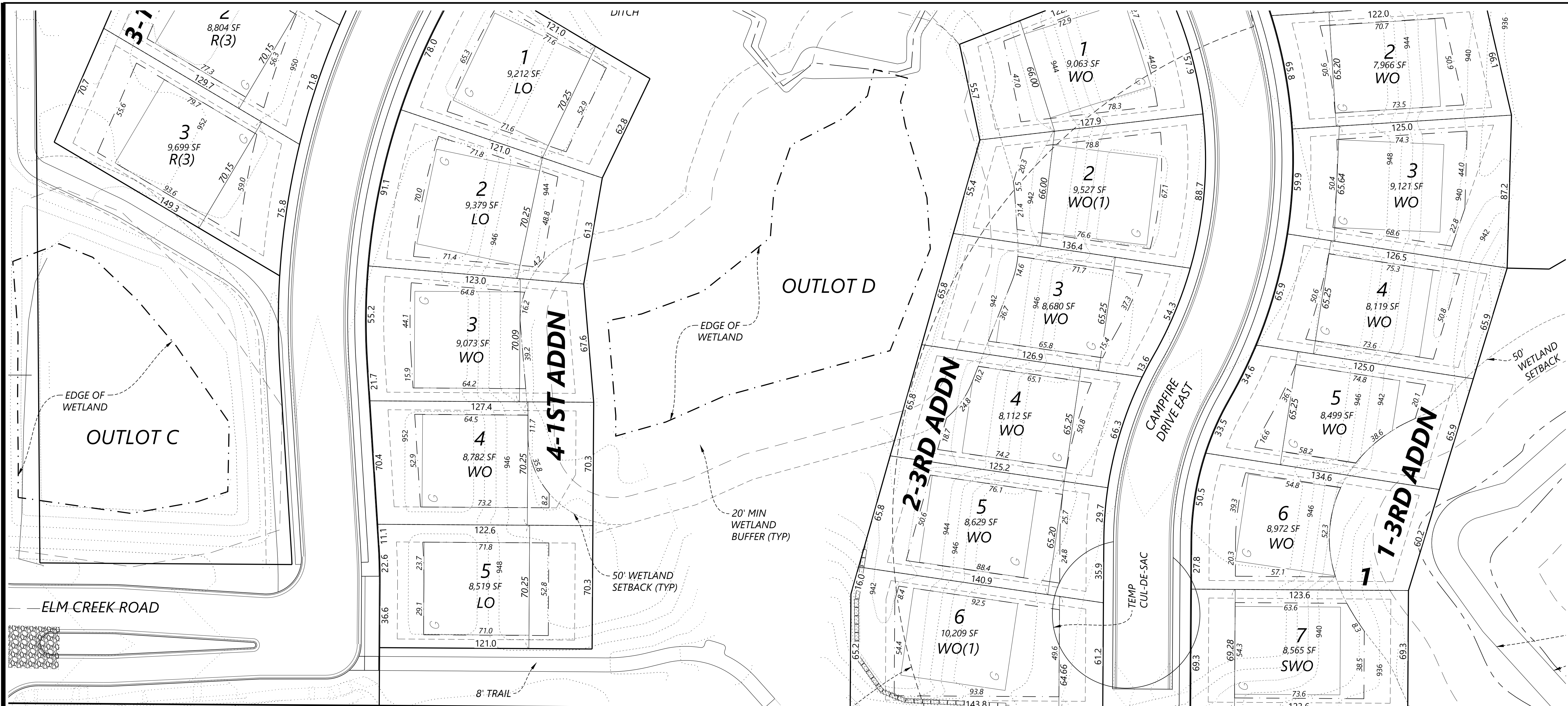
PREPARED FOR:
HARTMAN COMMUNITIES
1750 TOWER BOULEVARD, SUITE 100
VICTORIA, MN 55386

WOODLAND CREEK
WACONIA, MINNESOTA

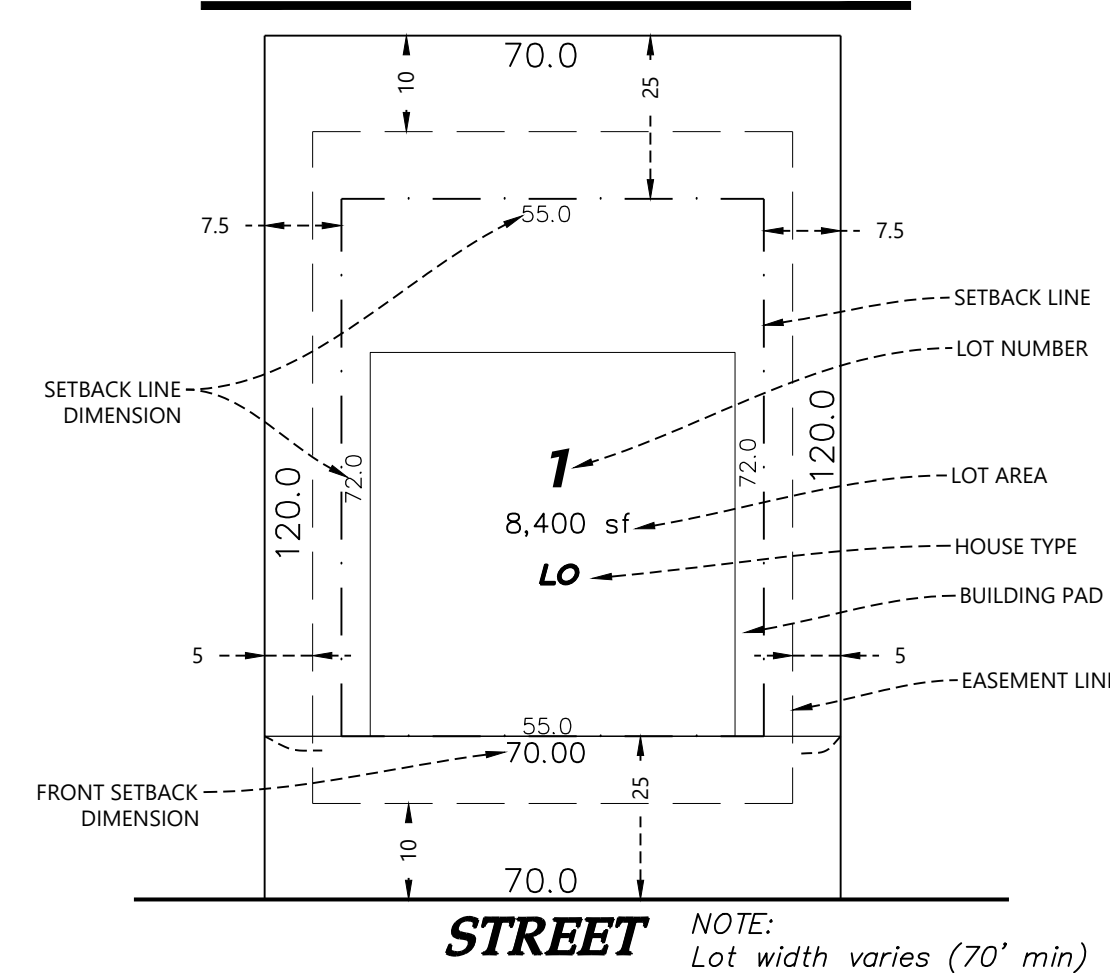
Westwood
Phone (952) 937-5150 12701 Whitewater Drive, Suite #300
Fax (952) 937-5822 Minnetonka, MN 55343
Toll Free (888) 937-5150 westwoodps.com
Westwood Professional Services, Inc.

LOT DIMENSION EXHIBIT

SHEET NUMBER:
4 OF **6**
DATE: 08/25/2021



Typical Lot Detail
(No Scale)



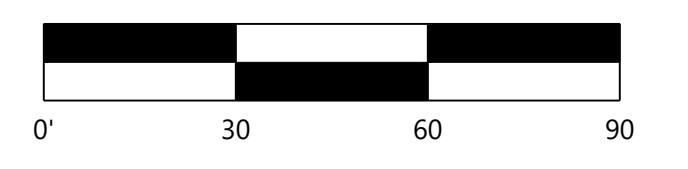
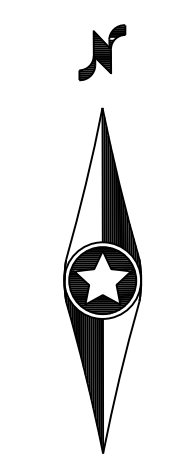
R = RAMBLER, GRADED FOR 8.0' OF DIFFERENCE FROM BASEMENT FLOOR ELEVATION TO FRONT GROUND GRADE AT GARAGE DOOR.

R(1) = RAMBLER, GRADED FOR 7.3' OF DIFFERENCE FROM BASEMENT FLOOR ELEVATION TO FRONT GROUND GRADE AT GARAGE DOOR.

LO = FULL BASEMENT LOOKOUT GRADED FOR 5.5' OF DIFFERENCE FROM THE REAR GROUND GRADE AT THE LOOKOUT TO THE FRONT GROUND GRADE AT THE GARAGE DOOR.

WO = FULL BASEMENT WALKOUT, GRADED FOR 8.5' OF DIFFERENCE FROM THE REAR GROUND GRADE AT THE WALKOUT TO FRONT GROUND AT GARAGE DOOR.

NOTE:
1. THE NUMBER IN THE PARENTHESIS INDICATES THE NUMBER OF BLOCKS THAT THE GARAGE IS DROPPED. EACH BLOCK=8".



NOT FOR CONSTRUCTION

DESIGNED:	
CHECKED:	CLM
DRAWN:	SRM
HORIZONTAL SCALE:	30
VERTICAL SCALE:	

INITIAL ISSUE:	08/25/2021
REVISIONS:	

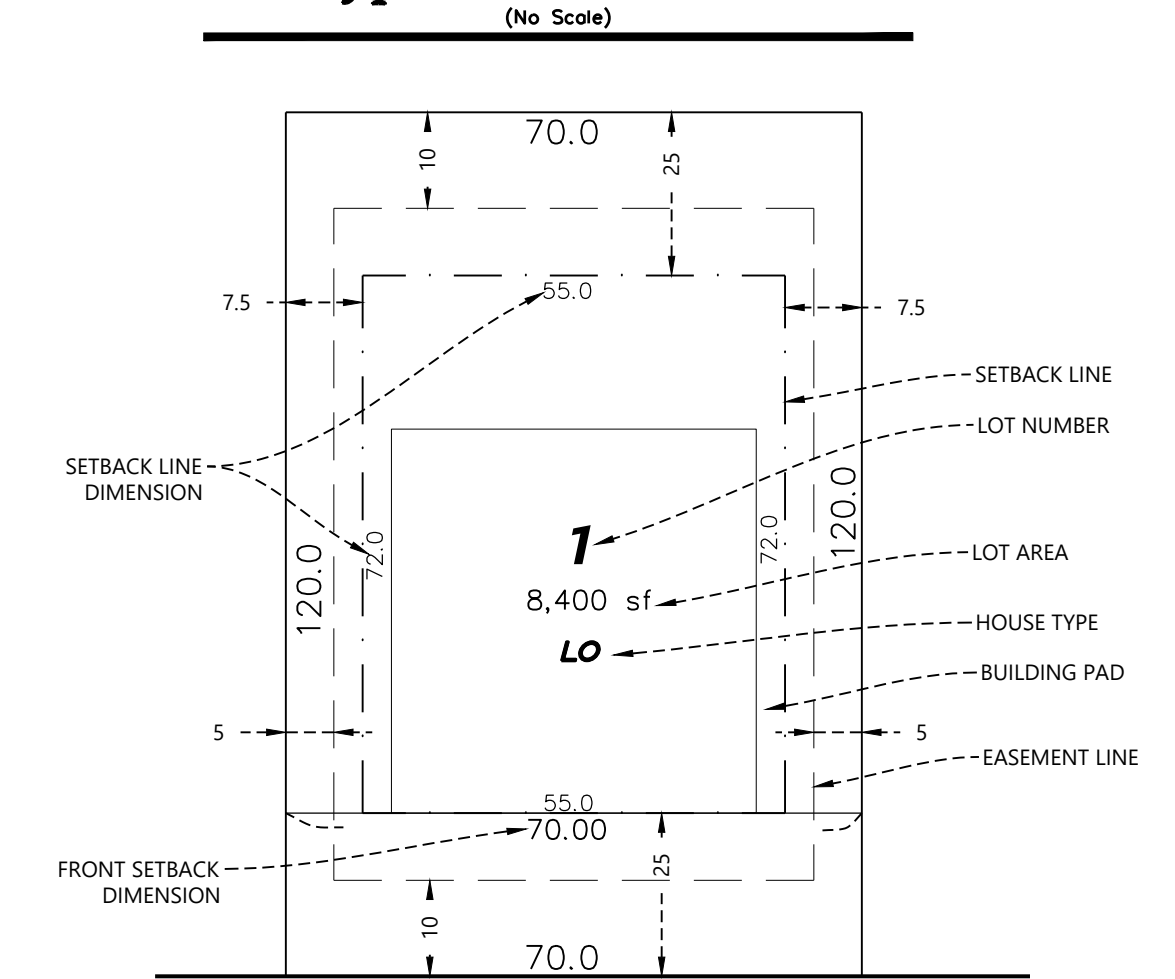
PREPARED FOR:
HARTMAN COMMUNITIES
1750 TOWER BOULEVARD, SUITE 100
VICTORIA, MN 55386

WOODLAND CREEK
WACONIA, MINNESOTA

Westwood
Phone (952) 937-5150 12701 Whitewater Drive, Suite #300
Fax (952) 937-5822 Minnetonka, MN 55343
Toll Free (888) 937-5150 westwoodps.com
Westwood Professional Services, Inc.

SHEET NUMBER:
5 OF **6**
LOT DIMENSION EXHIBIT
PROJECT NUMBER: 0021855.00 DATE: 08/25/2021

Typical Lot Detail

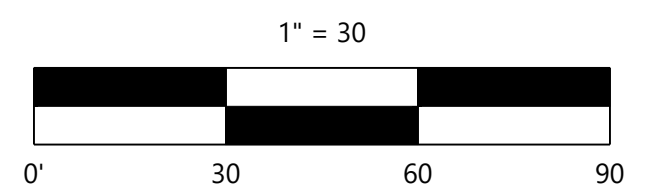


STREET

NOTE:
 Lot width varies (70' min)

- R = RAMBLER, GRADED FOR 8.0' OF DIFFERENCE FROM BASEMENT FLOOR ELEVATION TO FRONT GROUND GRADE AT GARAGE DOOR.
- R(1) = RAMBLER, GRADED FOR 7.3' OF DIFFERENCE FROM BASEMENT FLOOR ELEVATION TO FRONT GROUND GRADE AT GARAGE DOOR.
- LO = FULL BASEMENT LOOKOUT GRADED FOR 5.5' OF DIFFERENCE FROM THE REAR GROUND GRADE AT THE LOOKOUT TO THE FRONT GROUND GRADE AT THE GARAGE DOOR.
- WO = FULL BASEMENT WALKOUT, GRADED FOR 8.5' OF DIFFERENCE FROM THE REAR GROUND GRADE AT THE WALKOUT TO FRONT GROUND AT GARAGE DOOR.

NOTE:
 1. THE NUMBER IN THE PARENTHESIS INDICATES THE NUMBER OF BLOCKS THAT THE GARAGE IS DROPPED. EACH BLOCK=8".



NOT FOR CONSTRUCTION



© 2017 Westwood Professional Services, Inc. N:\0021855.00\DWG\CIVIL\0021855-PLAN02.DWG

WOODLAND CREEK

DESIGNED:	
CHECKED:	CLM
DRAWN:	SRM
HORIZONTAL SCALE:	30
VERTICAL SCALE:	

INITIAL ISSUE:	08/25/2021
REVISIONS:	

PREPARED FOR:
HARTMAN COMMUNITIES
 1750 TOWER BOULEVARD, SUITE 100
 VICTORIA, MN 55386

WOODLAND CREEK
 WACONIA, MINNESOTA

Westwood
 Phone (952) 937-5150 12701 Whitewater Drive, Suite #300
 Fax (952) 937-5822 Minnetonka, MN 55343
 Toll Free (888) 937-5150 westwoods.com
 Westwood Professional Services, Inc.

LOT DIMENSION EXHIBIT

SHEET NUMBER:
6 OF **6**

PROJECT NUMBER: 0021855.00 DATE: 08/25/2021